



**25**  
Years of  
**making**  
a difference  
1994 - 2019

# FSC Policy on Conversion

## Public consultation for first draft

Webinar (14, 20 August, 17 September 2019)

# OVERVIEW

1. BACKGROUND INTRODUCTION

2. FIRST DRAFT OF THE FSC POLICY ON CONVERSION

3. INTRODUCTION OF THE PUBLIC CONSULTATION

4. NEXT STEPS

5. OPEN DISCUSSIONS (40 Mins)



# OVERVIEW

1. BACKGROUND INTRODUCTION

2. FIRST DRAFT OF THE FSC POLICY ON CONVERSION

3. PUBLIC CONSULTATION

4. NEXT STEPS

5. OPEN DISCUSSIONS (40 Mins)



# MOTION HISTORY



**FSC® General Assembly 2014**  
Seville, Spain, 7-14 September



**FSC® General Assembly 2017**  
Vancouver, Canada, 8-13 October

## Motion 7 from GA 2017

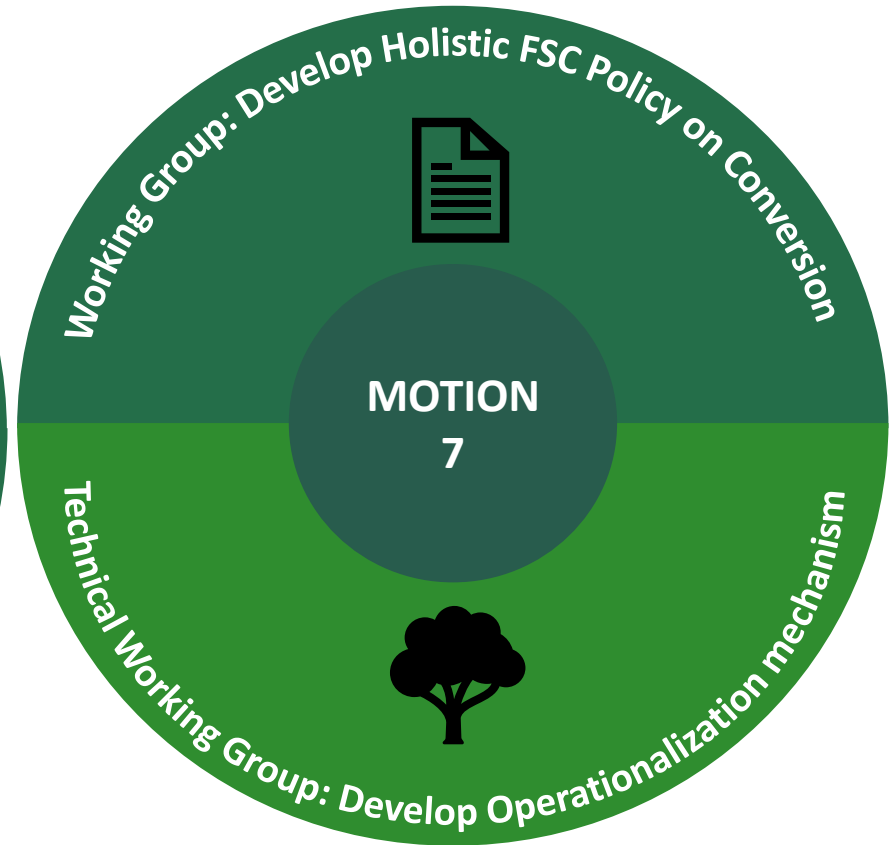
## Motion 12 from GA 2014



## Motion 18 from GA 2011

## MOTION 7

- Developing a **high-level conversion policy** (based on ideas already generated and discussed in the previous Motion 12 process).
- Considering **compensation for past conversion**, in terms of:
  - restoration and/or conservation for environmental values; and
  - restitution for socio-economic values.
- Including the issue of **non-forest ecosystems** conversion (wetlands, peatlands, savannahs or natural grasslands).
- **Aligning the diverse ways** in which conversion is treated in different parts of the FSC normative framework.



## WG - ToR

1. 1994 cut-off date: To retain, remove or change the rules to address past conversion.
2. Principles for compensation on past conversion, in terms of:
  - a) restoration and/or conservation of environmental values
  - b) restitution of socio-economic values
3. Concept of acceptable conversion as defined under current FSC rules.

Working Group: Develop Holistic FSC Policy on Conversion



**MOTION**

**7**

## TWG – ToR

1. Criteria, indicators and thresholds for conversion across the normative framework, including Policy for Association, Principles and Criteria, International Generic Indicators (IGI), Controlled Wood Standards and others as needed, and related definitions.
2. Instructions for Standard Developers to address any revised IGIs on conversion in National Forest Stewardship Standards and Interim National Standards.
3. Develop a compensation procedure and proposals for verification for (Details refer to TWG ToR)
4. Draft text for a possible motion to the 2020 General Assembly to reword FSC Principles & Criteria and to align the International Generic Indicators (IGIs), National Forest Stewardship Standards, Policy for Association and Controlled Wood standards with the Policy on Conversion.

## MOTION

7

Technical Working Group: Develop Operationalization mechanism



# A CHAMBER-BALANCED WORKING GROUP

## M7 WORKING GROUP MEMBERS

Name	Organization	Chamber	Country
Marthe Tollenaar	New Forests	ECON-N	Singapore/ Asia Pacific
Francisco Javier Rodriguez Aspillaga	CMPC celulosa	ECON-S	Chile/LATAM
Annika Terrana	WWF	ENV-N	US
Michal Zrust	Individual	ENV-S	Indonesia/ Asia Pacific
Linda Fienberg	Individual	SOC-N	Australia/Asia Pacific
Verma Dharam Pal Singh	Consultant	SOC-S	India/ Asia Pacific





# OVERVIEW

1. BACKGROUND INTRODUCTION

2. FIRST DRAFT OF THE FSC POLICY ON CONVERSION

3. PUBLIC CONSULTATION

4. NEXT STEPS

5. OPEN DISCUSSIONS (40 Mins)



**AUGUST 2018**

Composition of the Working Group was announced

**JULY 2019**

First draft of the FSC Policy on Conversion finalized:  
FSC-POL-01-007 V1-0 D1-0

**JUNE**

**OCTOBER 2018**

ToR for Working Group approved by the Steering Committee

**OCTOBER 2018**

**JUNE 2019**

21 WG calls  
3 face to face meetings  
Consultative forum  
Policy drafts 0-0 to 0-14

**AUGUST**

**SEPTEMBER 2019**

1st Public consultation

# AIMS OF THE POLICY

1

## POSITION

Clarify FSC's position on conversion

2

## CAPACITY

Enhance FSC's capacity to support global commitments to conservation of natural ecosystems

3

## MECHANISM

Provide a mechanism for forests which have been previously converted after 1994 to enter the FSC system upon implementation of an approved compensation plan which delivers restoration and restitution outcomes

4

## PROMOTE

Promote further conservation, restoration and restitution

# POLICY SCOPE

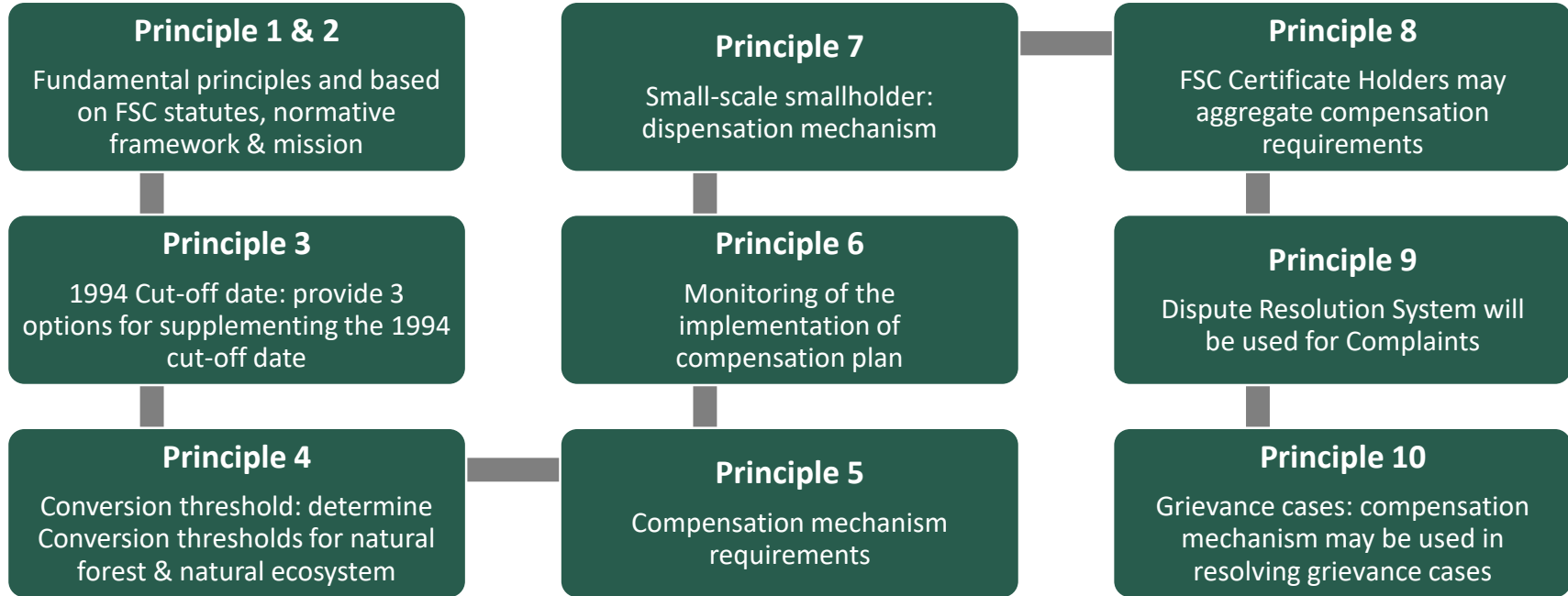
## DOES APPLY

- a) To organizations which are or would like to be associated with FSC;
- b) Where the scope of existing certificates is extended after the effective date of this Policy to include non-forest ecosystems converted prior to the effective date of this Policy;
- c) To existing Controlled Wood Forest Management certificates.

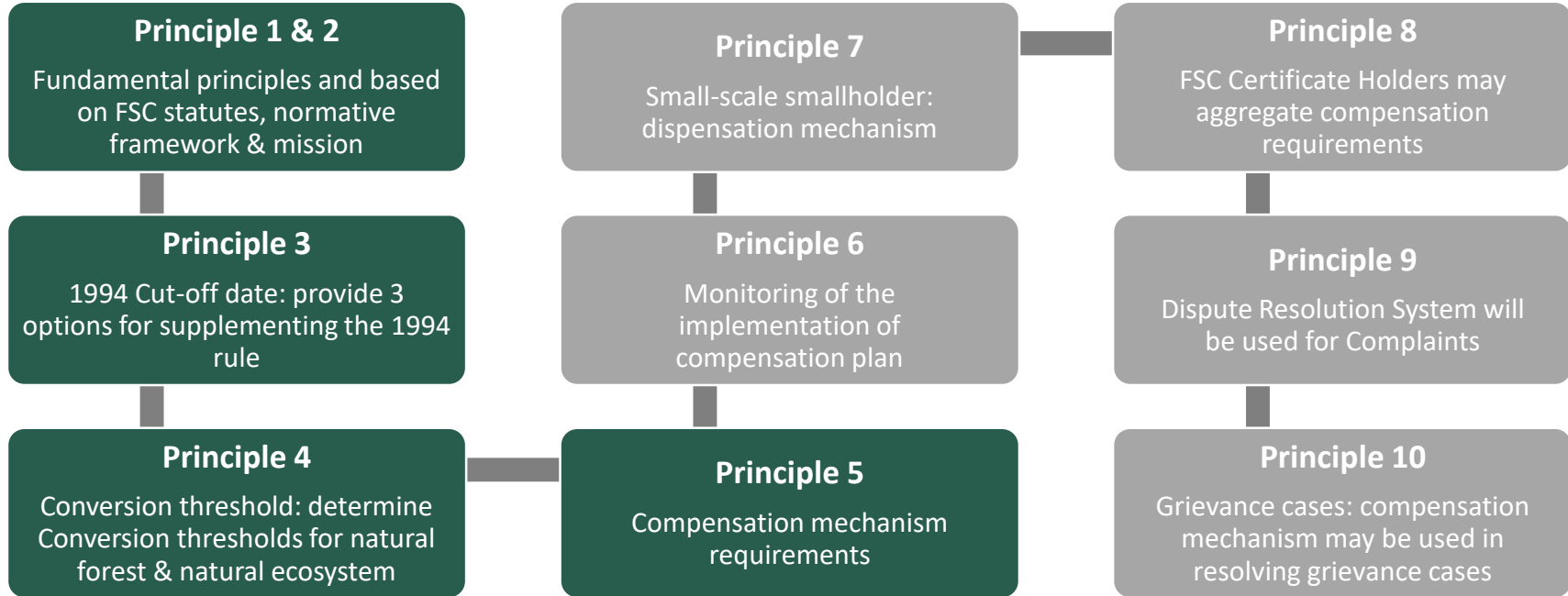
## DOES NOT APPLY

- a) To conversion that took place prior to 1994;
- b) To non-forest ecosystems within existing, valid FM certificates.

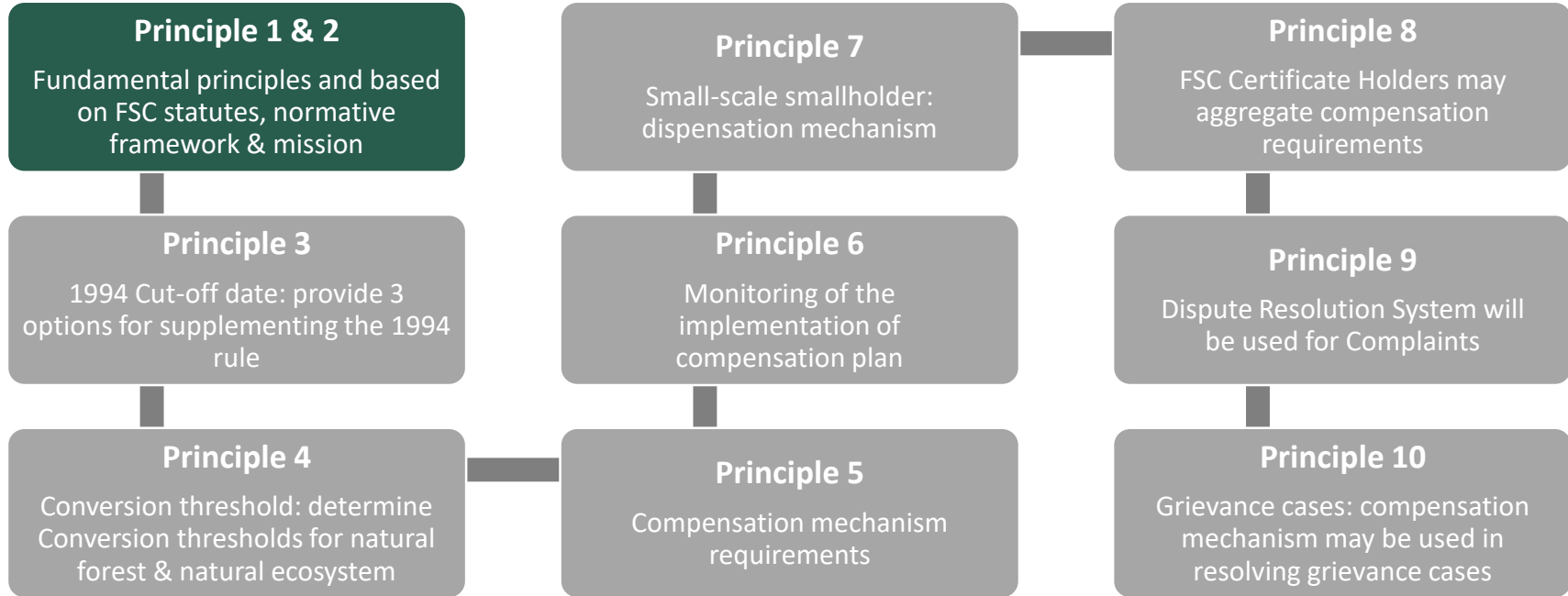
# POLICY STRUCTURE



# POLICY STRUCTURE



# POLICY STRUCTURE



## POLICY PROPOSAL – POLICY PRINCIPLE 2



***Natural Forest***

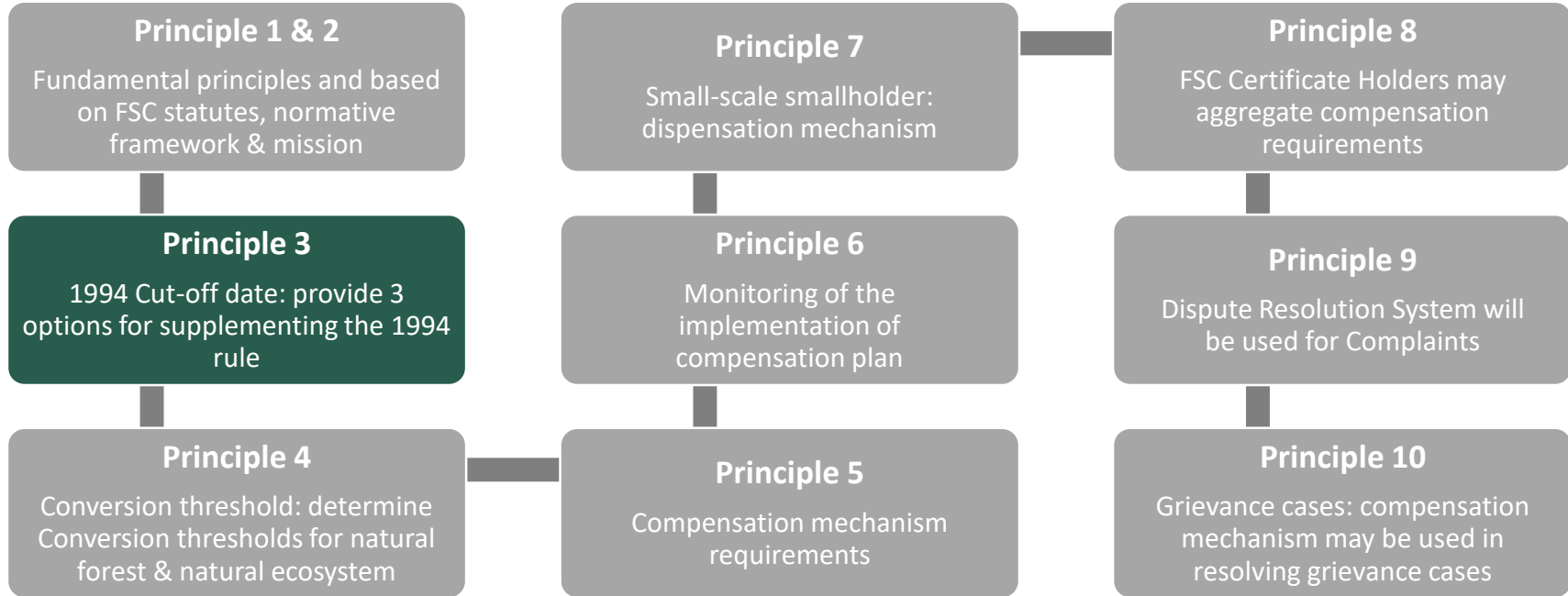
*2. FSC requires organizations associating with it to demonstrate that they are not converting natural ecosystems, including natural forests, and ensuring conservation and restoration through compliance with requirements in the FSC normative framework.*



***Natural Ecosystem***



# POLICY STRUCTURE



## POLICY PROPOSAL – CUT OFF DATE

**This Policy proposes to keep the 1994 cut-off date and supplement it with one of the following 3 options for conversion after 1994.**

3. To incentivize and advance the restoration and conservation of natural ecosystems, and restitution of social harm caused by conversion, FSC enables organizations that were *directly or indirectly involved\** in conversion that occurred after 1994 to seek association or certification through one of the following 3 Compensation options:



**1994, Compensation**

or



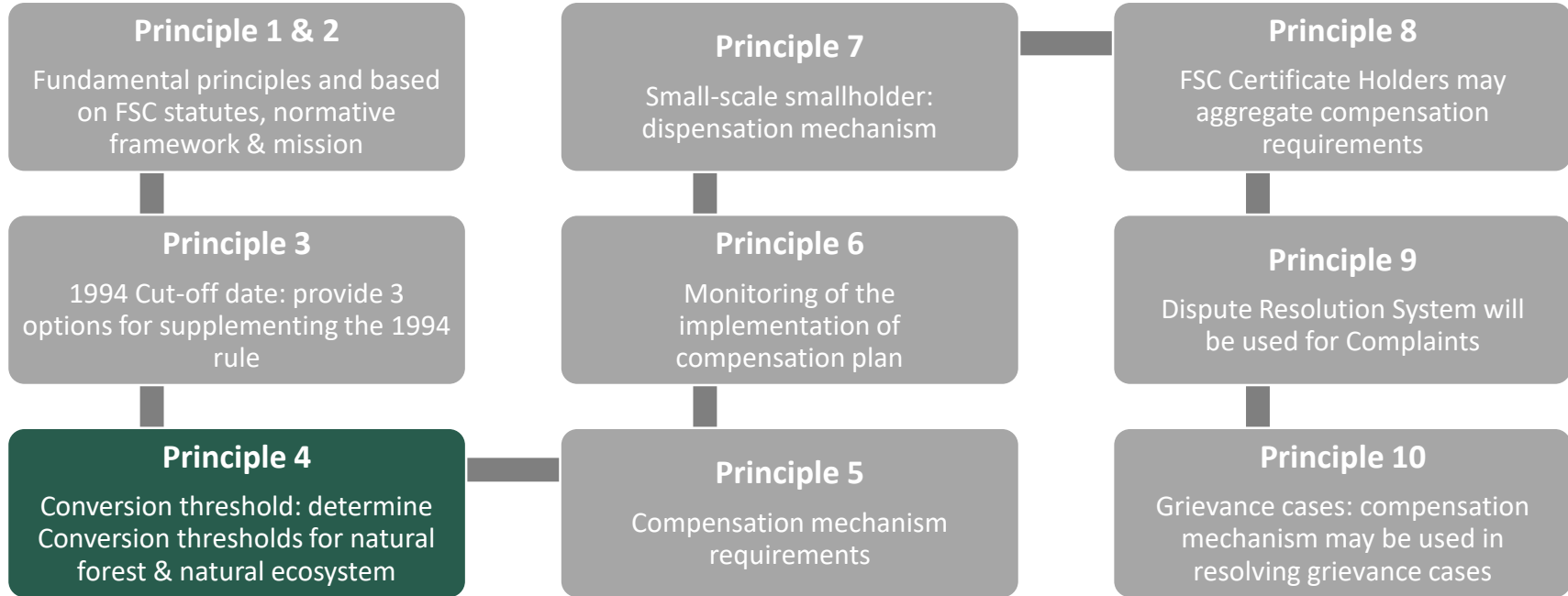
**1994, Compensation  
2020, More stringent  
Compensation**

or

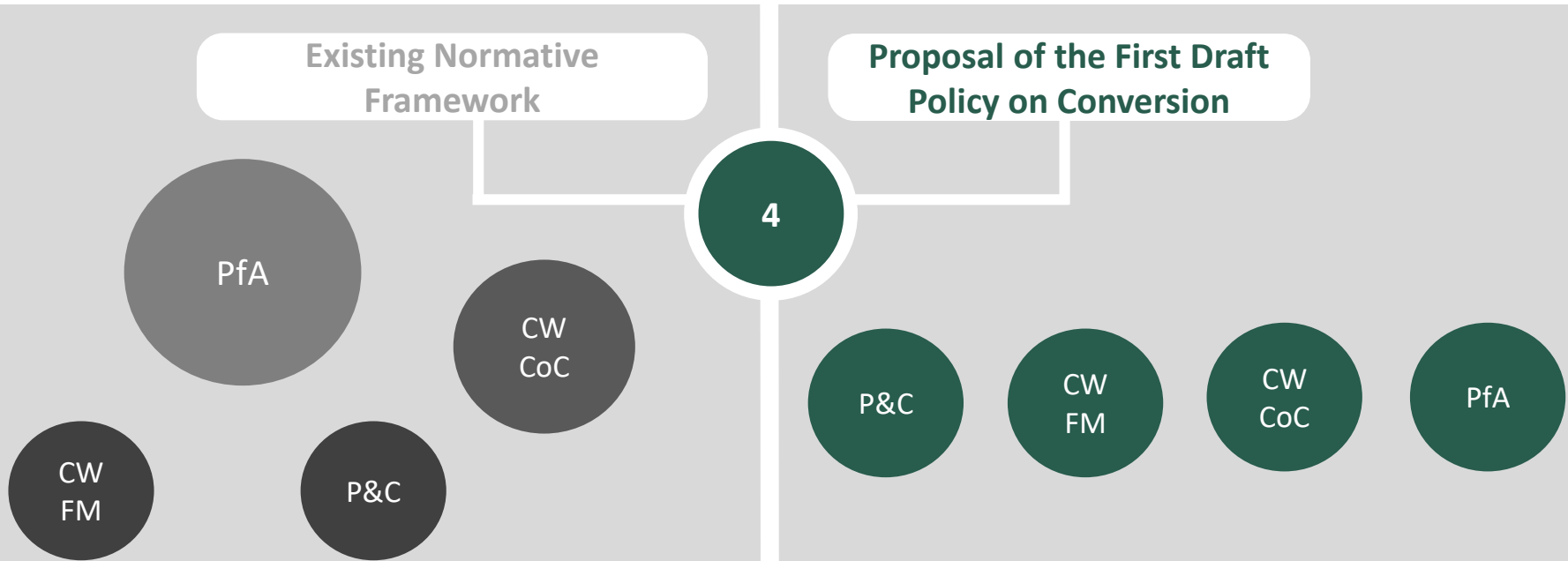


**1994- 2020, Compensation  
2020, additional cut off date**

# POLICY STRUCTURE

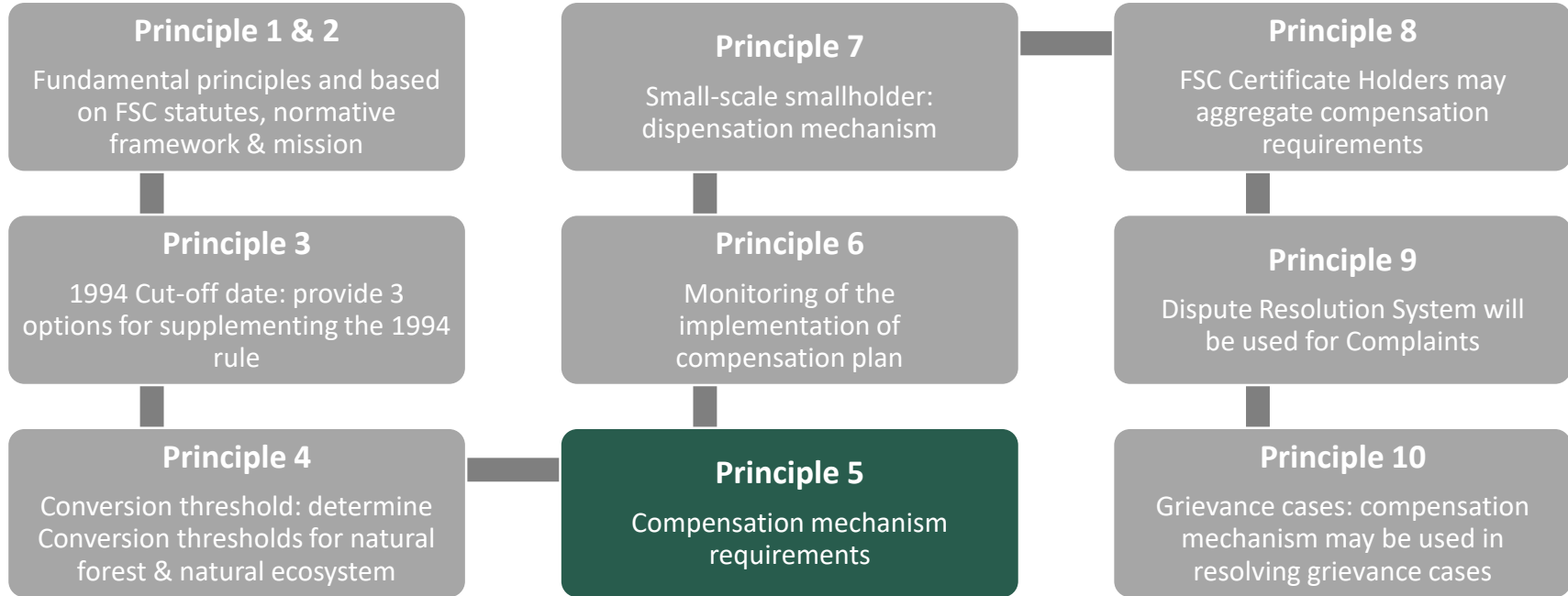


# POLICY IMPACT ON EXISTING NORMATIVE FRAMEWORK



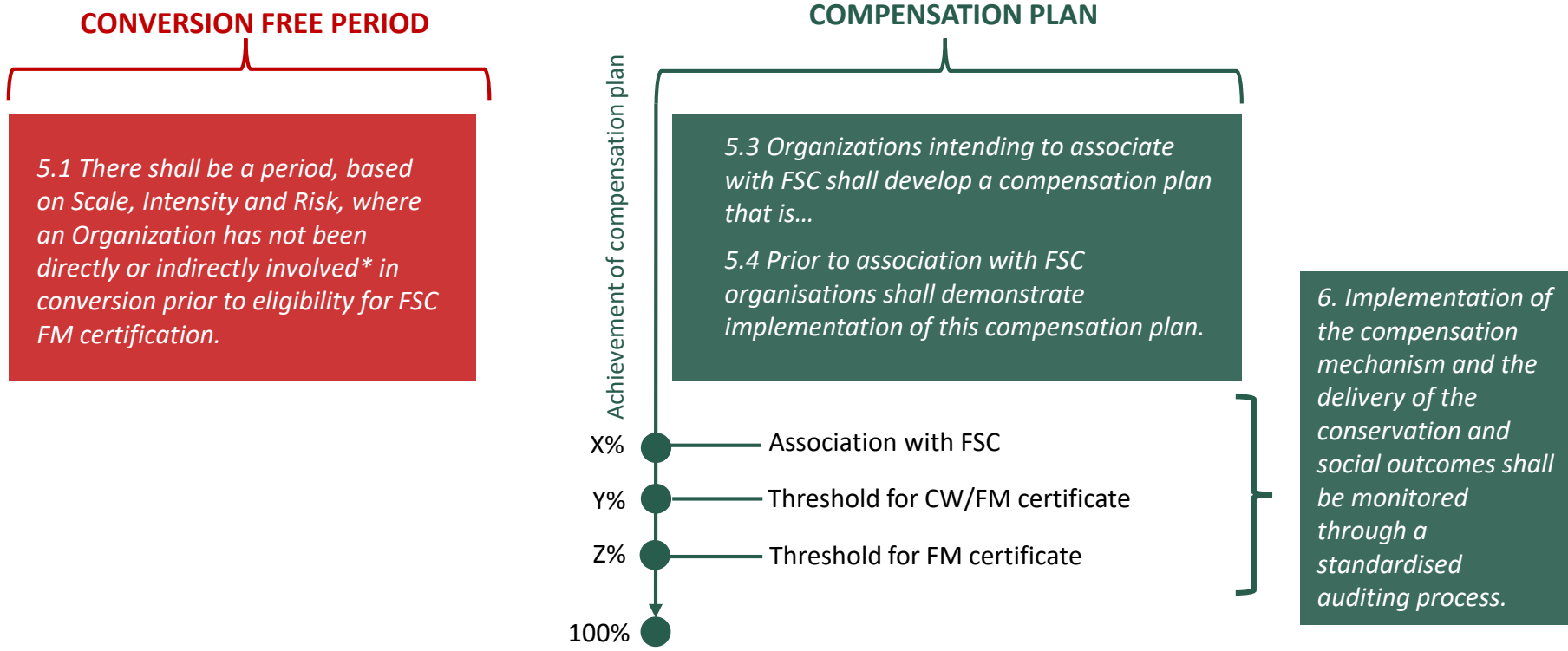
*Intent of the policy is to:  
Align what is considered as tolerable conversion within the FSC system*

# POLICY STRUCTURE



# POLICY PROPOSAL – COMPENSATION MECHANISM

5. FSC has a compensation mechanism that delivers conservation and restoration of converted ecosystems and restitution to *affected stakeholders\**, including rights-holders. This mechanism provides a pathway into FSC for Organizations that have been *directly or indirectly involved\** in conversion.



## OVERVIEW

1. BACKGROUND INTRODUCTION

2. FIRST DRAFT OF THE FSC POLICY ON CONVERSION

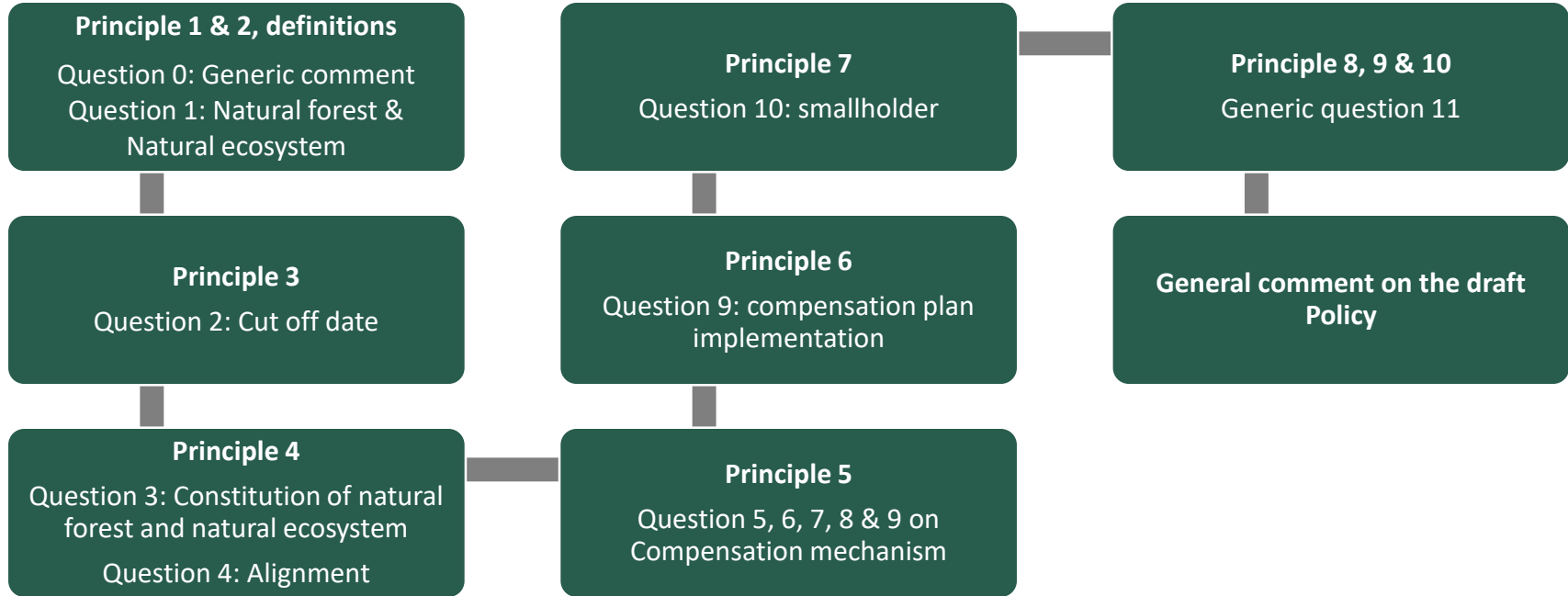
3. PUBLIC CONSULTATION

4. NEXT STEPS

5. OPEN DISCUSSIONS (40 Mins)



# PUBLIC CONSULTATION STRUCTURE





## OVERVIEW

1. BACKGROUND INTRODUCTION

2. FIRST DRAFT OF THE FSC POLICY ON CONVERSION

3. PUBLIC CONSULTATION

4. NEXT STEPS

5. OPEN DISCUSSIONS (40 Mins)



# Next steps



**AUGUST**

**PUBLIC CONSULTATION**  
Webinars XX



**SEPTEMBER**

**PUBLIC CONSULTATION**  
Webinars XX



**OCTOBER**

**WG ONLINE MEETINGS**  
Analyze Feedbacks



**NOVEMBER**

**4<sup>TH</sup> IN PERSON MEETING**  
Develop draft 2-0

## OVERVIEW

1. BACKGROUND INTRODUCTION

2. FIRST DRAFT OF THE FSC POLICY ON CONVERSION

3. PUBLIC CONSULTATION

4. NEXT STEPS

5. OPEN DISCUSSIONS (40 Mins)



**25**  
Years of  
**making**  
a difference  
1994 - 2019

Forest Stewardship Council®

FSC® International Center

Adenauerallee 134, 53113 Bonn, Germany

T +49 (0) 228 367 66-0

F +49 (0) 228 367 66-30

FSC International Center © All rights reserved

FSC® F000100

[ic.fsc.org](http://ic.fsc.org)

